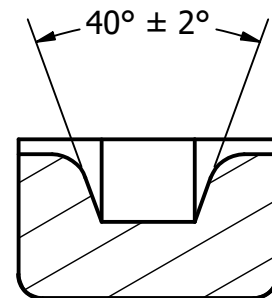
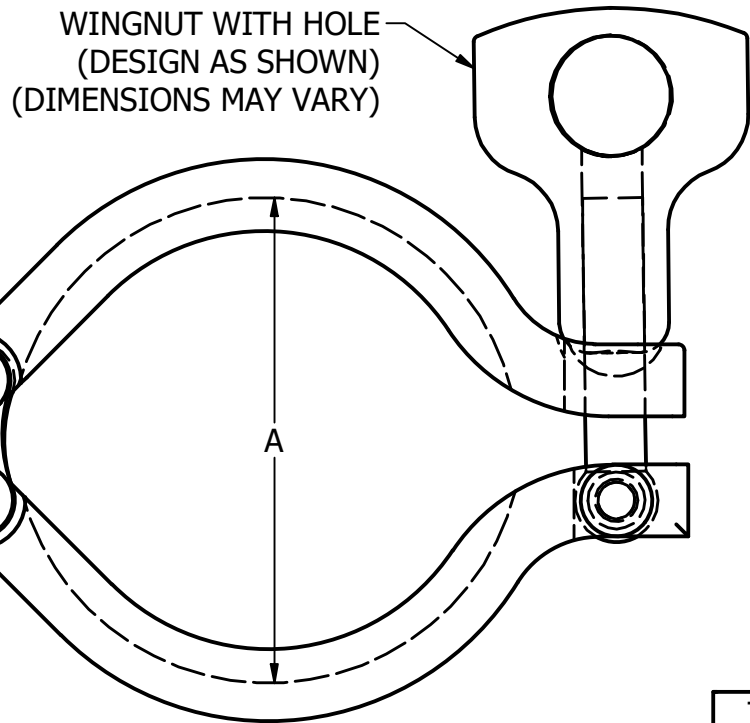


Size	Size	A	Thread
13MHHM-DP-.50	1/2" & 3/4"	1.125 +/- .010	5/16-18
13MHHM-DP-1	1" & 1 1/2"	2.122 +/- .010	5/16-18
13MHHM-DP-2	2"	2.654 +/- .010	5/16-18
13MHHM-DP-2.5	2 1/2"	3.185 +/- .010	5/16-18
13MHHM-DP-3	3"	3.717 +/- .010	5/16-18
13MHHM-DP-4	4"	4.820 +/- .010	5/16-18
13MHHM-DP-5	5"	5.825 +/- .010	5/16-18
13MHHM-DP-6	6"	6.695 +/- .020	5/16-18
13MHHM-DP-8	8"	8.695 +/- .020	3/8-16
13MHHM-DP-10	10"	10.695 +/- .020	3/8-16
13MHHM-DP-12	12"	12.695 +/- .020	3/8-16



ALL DIMENSIONS IN INCHES  
 \* - ALL DIMENSIONS CHECKED FROM THIS DIMENSION

TOLERANCES  REFER TO STEEL & O'BRIEN DOCUMENT # QS121	<b>Steel &amp; O'Brien Mfg. Inc.</b>	
	TITLE 13MHHM-DP - DOUBLE PIN CLAMP	
	DWG NO: <b>13MHHM-DP</b>	REV 3
	SCALE: NTS	SHEET 1 OF 1