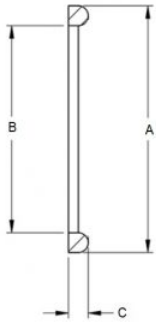


# DIN 11851 Clamp Gaskets (Metric) Size Chart



| DIN Size | A(mm) | B(mm) | C(mm) |
|----------|-------|-------|-------|
| 10       | 20    | 12    | 4.5   |
| 15       | 26    | 18    | 4.5   |
| 20       | 33    | 23    | 5     |
| 25       | 40    | 30    | 5     |
| 32       | 46    | 36    | 5     |
| 40       | 52    | 42    | 5     |
| 50       | 64    | 54    | 5     |
| 65       | 81    | 71    | 5     |
| 80       | 95    | 85    | 5     |
| 100      | 114   | 104   | 6     |
| 125      | 142   | 130   | 7     |
| 150      | 167   | 155   | 7     |