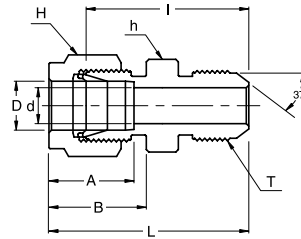


# SAU

An Union

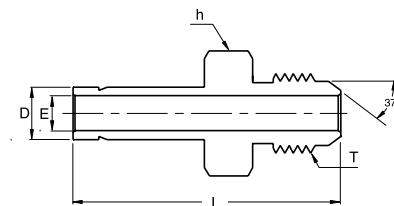
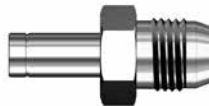


## Connects Fractional Tubes To An Flared Tubes

Part No.	Tube OD D (inch)	AN Tube Flare Size (inch)	Straight Thread T (U)	d Min	Width Across Flat		A	B	I	L
					h (inch)	H (inch)				
SAU - 2 - 2U	1/8	1/8	5/16-24	1.52	7/16	7/16	12.70	15.24	25.65	32.25
SAU - 2 - 4U	1/8	1/4	7/16-20	2.28	1/2	7/16	12.70	15.24	28.44	35.05
SAU - 4 - 4U	1/4	1/4	7/16-20	4.31	1/2	9/16	15.24	17.78	30.22	37.59
SAU - 5 - 5U	5/16	5/16	1/2-20	5.84	9/16	5/8	16.25	18.54	30.98	38.35
SAU - 6 - 4U	3/8	1/4	7/16-20	4.31	5/8	11/16	16.76	19.30	32.25	39.62
SAU - 6 - 6U	3/8	3/8	9/16-18	7.11	5/8	11/16	16.76	19.30	32.25	39.62
SAU - 8 - 8U	1/2	1/2	3/4-16	9.90	13/16	7/8	22.86	21.84	35.81	45.97
SAU - 12 - 12U	3/4	3/4	1-1/16-12	15.49	1-1/8	1-1/8	24.38	21.84	43.18	53.34
SAU - 16 - 16U	1	1	1-5/16-12	21.33	1-3/8	1-1/2	31.24	26.41	49.27	61.46

# SAA

An Adapter



## Connects Fractional SUPERLOK® Port To AN Flared Tubes

Part No.	Tube OD D (inch)	AN Tube Flare Size (inch)	Straight Thread T (U)	Width Across Flat h (inch)	E	L
SAA - 4 - 4U	1/4	1/4	7/16-20	1/2	4.40	37.08
SAA - 6 - 4U	3/8	1/4	7/16-20	1/2	6.90	38.86
SAA - 6 - 6U	3/8	3/8	9/16-18	5/8	6.90	39.62
SAA - 8 - 8U	1/2	1/2	3/4-16	13/16	9.40	48.51
SAA - 12 - 12U	3/4	3/4	1-1/16-12	1-1/8	14.80	56.13
SAA - 16 - 16U	1	1	1-5/16-12	1-3/8	20.40	65.53

- Dimensions and Drawings are for reference only and are subject to change without prior notice.  
 - Unless otherwise specified, all dimensions are in millimeters.  
 - Sizes, pressure classes, and end connections not listed are available upon request.  
 - Dimensions shown with SUPERLOK nuts finger-tight, where applicable.