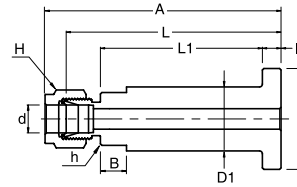
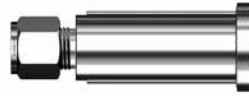


# SFTC

## Lap Joint Flange Tube Connector



### Connects Fractional Tubes

Part No.	Tube Size (inch)	Flange Seat	Dimensions									
			A	B	L1	L	I	h (inch)	H (inch)	D	D1	d (Min)
SFTC - 4 - SM	1/4	SM	80.8	8.9	56.5	74.9	6.5	11/16	9/16	34.5	21.1	4.8
SFTC - 4 - SR	1/4	SR	80.8	8.9	56.5	74.9	6.5	11/16	9/16	34.5	21.1	4.8
SFTC - 6 - SM	3/8	SM	82.3	8.9	56.5	74.9	6.5	11/16	11/16	34.5	21.1	7.1
SFTC - 6 - SR	3/8	SR	82.3	8.9	56.5	74.9	6.5	11/16	11/16	34.5	21.1	7.1
SFTC - 8 - SM	1/2	SM	85.1	8.9	56.5	74.9	6.5	3/4	7/8	34.5	21.1	10.4
SFTC - 8 - SR	1/2	SR	85.1	8.9	56.5	74.9	6.5	3/4	7/8	34.5	21.1	10.4

Lap joint flange tube connector provides easy joint between process lines and instruments designed for use with 1/2in Lap joint flanges to ANSI B 16.5 or BS 1560

### Flange Seal Finish

Two surface finishes, smooth or serrated, are available on the sealing surface of the stub end.



**Smooth**  
Identifier : SM  
Ra 3.2 ~ 6.3  
micrometer

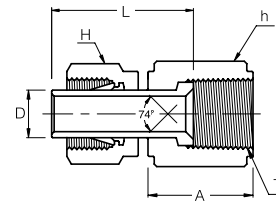


**Serrated**  
Identifier : SR  
Ra 6.3 ~ 12.5  
micrometer

\*Note : GROOVE identifies serrated surface finish

# SAF

## An Flare



### Connects Fractional SUPERLOK® Port To Male AN

Part No.	Tube O.D. D (inch)	AN Tube Flare Size (inch)	Straight Thread T (U)	Width Across Flat		A	L
				h (inch)	H (inch)		
SAF - 2 - 2U	1/8	1/8	5/16-24	3/8	7/16	13.71	18.54
SAF - 2 - 4U	1/8	1/4	7/16-20	9/16	7/16	15.74	19.05
SAF - 4 - 4U	1/4	1/4	7/16-20	9/16	9/16	15.74	23.20
SAF - 6 - 6U	3/8	3/8	9/16-18	11/16	11/16	18.28	27.30
SAF - 8 - 8U	1/2	1/2	3/4-16	7/8	7/8	21.59	34.50

- Dimensions and Drawings are for reference only and are subject to change without prior notice.
- Unless otherwise specified, all dimensions are in millimeters.
- Sizes, pressure classes, and end connections not listed are available upon request.
- Dimensions shown with SUPERLOK nuts finger-tight, where applicable.