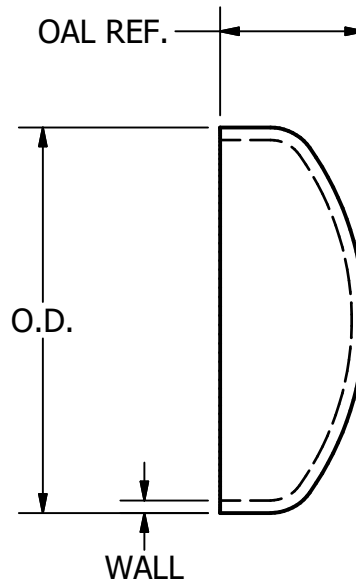


PART NO.	O.D.	OAL REF.	WALL
16W-.50	.500	.250	.050-.071
16W-.75	.750	.312	.050-.071
16W-1	1.000	.375	.050-.071
16W-1.5	1.500	.562	.050-.071
16W-2	2.000	.750	.050-.071
16W-2.5	2.500	1.000	.050-.071
16W-3	3.000	1.250	.050-.071
16W-4	4.000	1.500	.066-.091
16W-5	5.000	1.625	.095-.120
16W-6	6.000	1.980	.095-.120
16W-7	7.000	2.250	.125
16W-8	8.000	2.888	.140
16W-10	10.000	3.251	.123-.157
16W-12	12.000	3.815	.123-.157



TOLERANCES	Steel & O'Brien Mfg. Inc.	
REFER TO STEEL & O'BRIEN DOCUMENT # QS121	TITLE STAMPED END CAP	
	DWG NO: 16W	REV
	SCALE: N/A	SHEET 1 OF 1