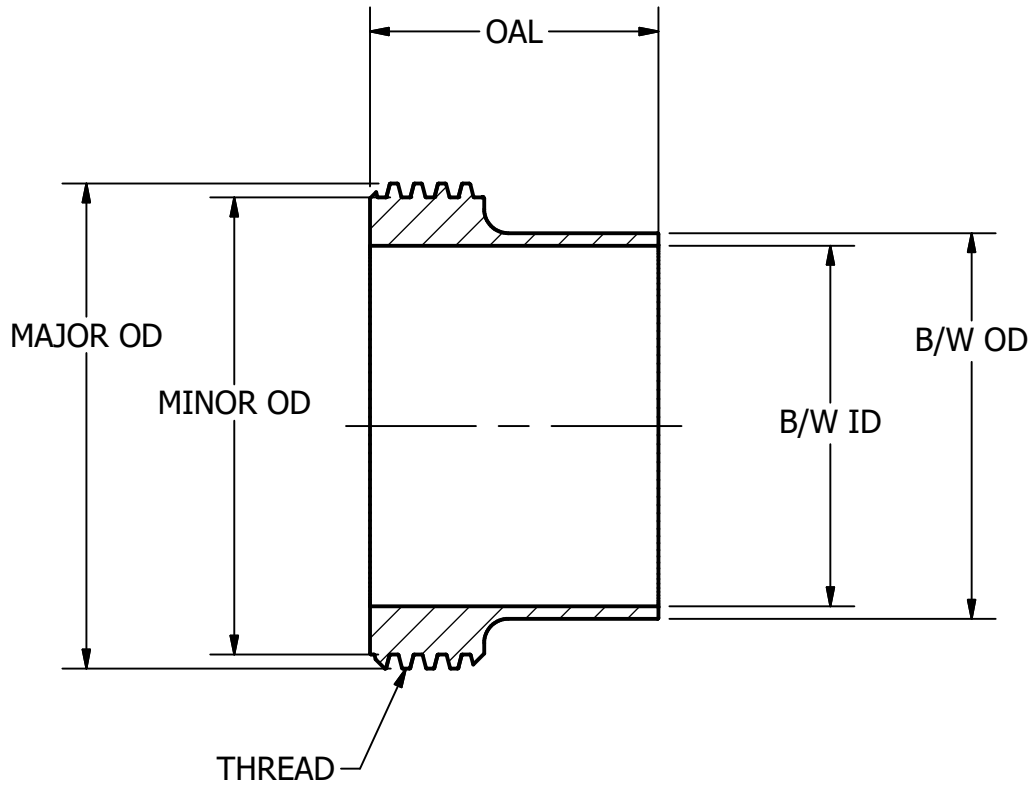


| PART NO. | MAJOR OD | MINOR OD | THREAD | B/W OD | B/W ID | OAL |
|------------|----------|----------|--------------|--------|--------|-------|
| L15AJP-1 | 1.453 | 1.308 | 1.462-8 ACME | 1.000 | .870 | 1.375 |
| L15AJP-1.5 | 1.984 | 1.840 | 1.994-8 ACME | 1.500 | 1.370 | 1.500 |
| L15AJP-2 | 2.516 | 2.371 | 2.526-8 ACME | 2.000 | 1.870 | 1.500 |
| L15AJP-2.5 | 3.048 | 2.903 | 3.058-8 ACME | 2.500 | 2.370 | 1.750 |
| L15AJP-3 | 3.579 | 3.434 | 3.590-8 ACME | 3.000 | 2.870 | 1.750 |
| L15AJP-4 | 4.683 | 4.497 | 4.695-6 ACME | 4.000 | 3.834 | 1.750 |



| | | |
|---|---|--------------|
| TOLERANCES | Steel & O'Brien Mfg. Inc. | |
| REFER TO STEEL & O'BRIEN DOCUMENT # QS121 | TITLE ACME x BW LONG JOHN PERRY FERRULE L15AJP | |
| | DWG NO: L15AJP | REV |
| | SCALE: N/A | SHEET 1 OF 1 |