

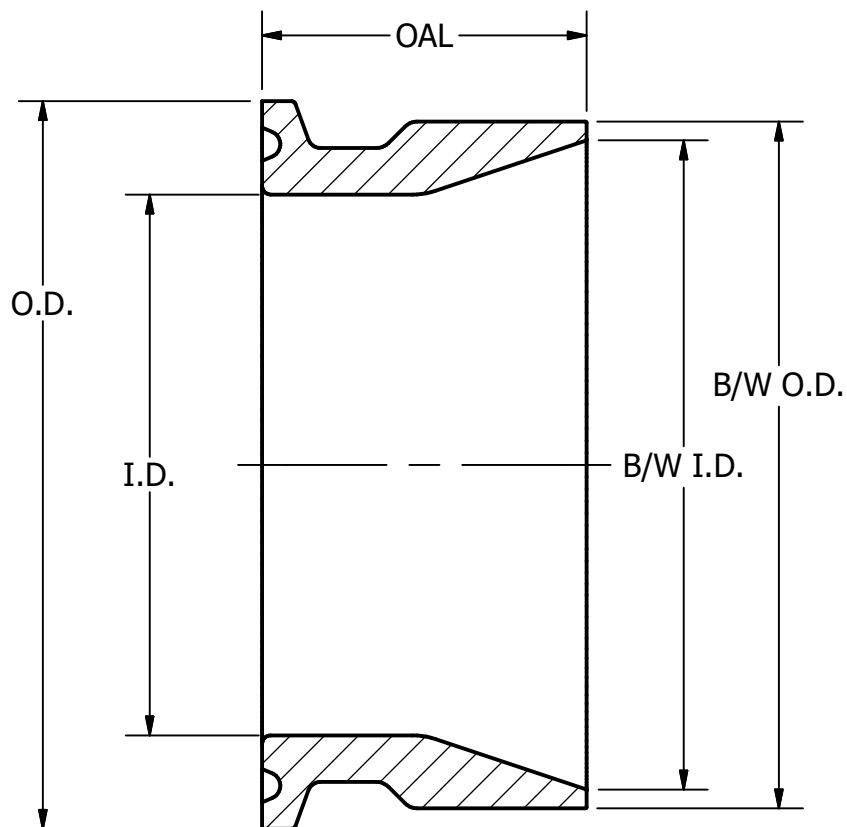
2

1

PART NO.	O.D.	I.D.	B/W O.D.	B/W I.D.	OAL
19MPV-.50	.984	.370	.840	.710	1.500
19MPV-.75	.993	.620	1.050	.920	1.500
19MPV-1	1.984	.870	1.315	1.185	1.125
19MPV-1.5	1.984	1.370	1.900	1.770	1.125
19MPV-2	2.516	1.870	2.375	2.245	1.125
19MPV-2.5	3.047	2.370	2.875	2.709	1.125
19MPV-3	3.579	2.870	3.500	3.334	1.125
19MPV-4	4.682	3.834	4.500	4.334	1.125
19MPV-6	6.570	5.782	6.625	6.407	1.125
19MPV-12	12.570	11.732	12.720	12.420	1.875

B

B



A

A

TOLERANCES	Steel & O'Brien Mfg. Inc.	
REFER TO STEEL & O'BRIEN DOCUMENT # QS121	TITLE TC X SCH-5 BW	
	DWG NO: <b>19MPV</b>	REV
	SCALE: N/A	SHEET 1 OF 1

2

1

1