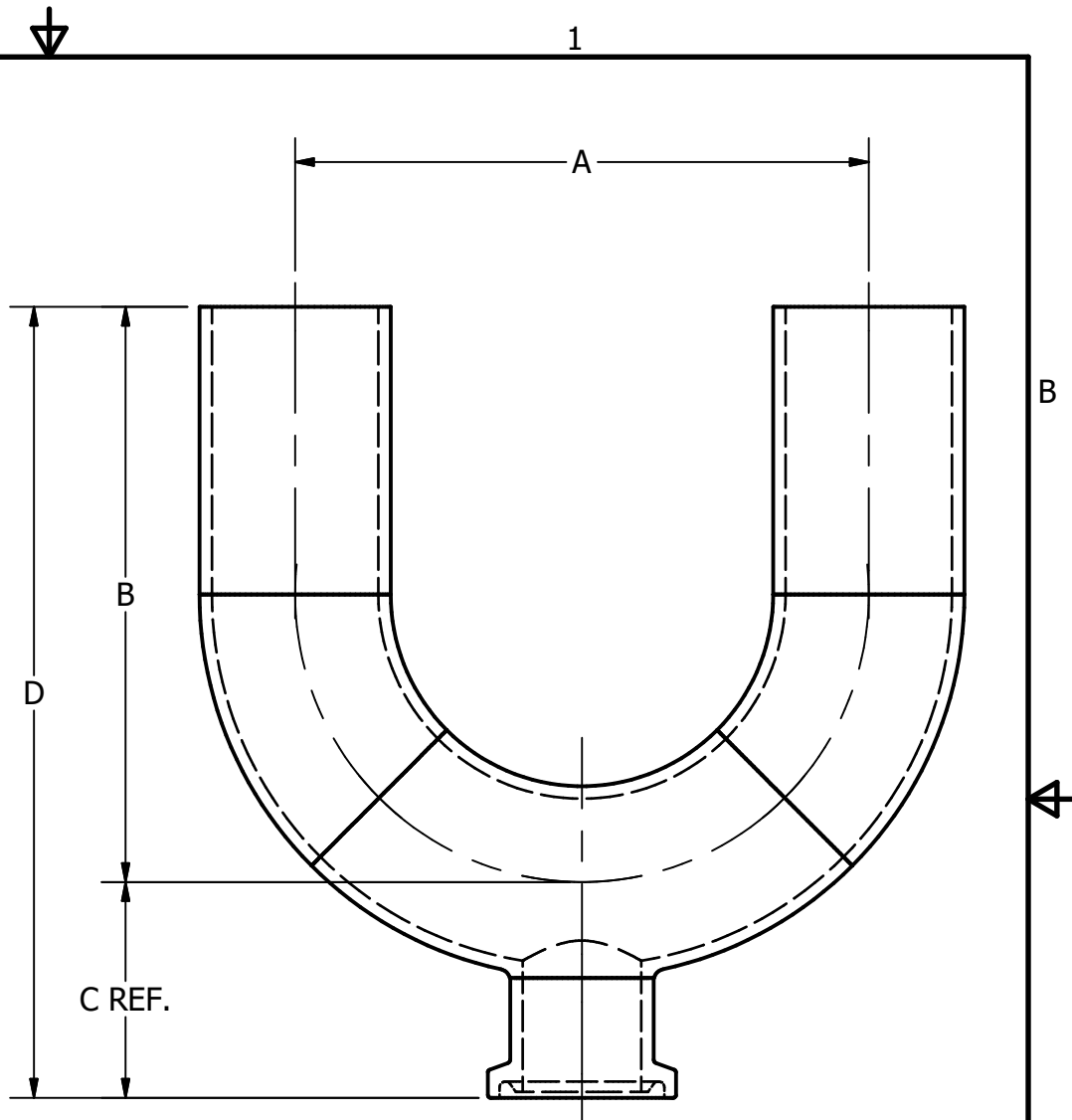


PART NO.	A	B	C	D
S2UBWWK-.75X.50	4.500	3.750	.875	4.625
S2UBWWK-1.5X.75	4.500	4.500	1.375	5.875
S2UBWWK-1.5X1	4.500	4.500	1.375	5.875
S2UBWWK-1X.75	3.000	3.000	1.125	4.125
S2UBWWK-2.5X.50	7.500	5.750	1.875	7.625
S2UBWWK-2.5X1.5	7.500	5.750	1.875	7.625
S2UBWWK-2.5X1	7.500	5.750	1.875	7.625
S2UBWWK-2.5X2	7.500	5.750	1.875	7.625
S2UBWWK-2X.50	6.000	5.000	1.625	6.625
S2UBWWK-2X.75	6.000	5.000	1.625	6.625
S2UBWWK-2X1.5	6.000	5.000	1.625	6.625
S2UBWWK-2X1	6.000	5.000	1.625	6.625
S2UBWWK-3X.50	9.000	6.500	2.062	8.625
S2UBWWK-3X1.5	9.000	6.500	2.125	8.625
S2UBWWK-3X1	9.000	6.500	2.125	8.625
S2UBWWK-3X2	9.000	6.500	2.125	8.625
S2UBWWK-4X.50	12.000	8.500	2.625	11.125
S2UBWWK-4X.75	12.000	8.500	2.625	11.125
S2UBWWK-4X1.5	12.000	8.500	2.625	11.125
S2UBWWK-4X1	12.000	8.500	2.625	11.125
S2UBWWK-4X2.5	12.000	8.500	2.625	11.125
S2UBWWK-4X2	12.000	8.500	2.625	11.125
S2UBWWK-4X3	12.000	8.500	2.625	11.125



TOLERANCES & MATERIAL

REFER TO
LATEST ASME-BPE
PUBLICATION

Steel & O'Brien Mfg. Inc.

TITLE
EXTENDED TANGENT X TC BOTTOM OUTLET POINT
OF USE

DWG NO: **S2UBWWK**

SCALE: N/A

SHEET 1 OF 1

B

A

B

A

2

1

2

1